

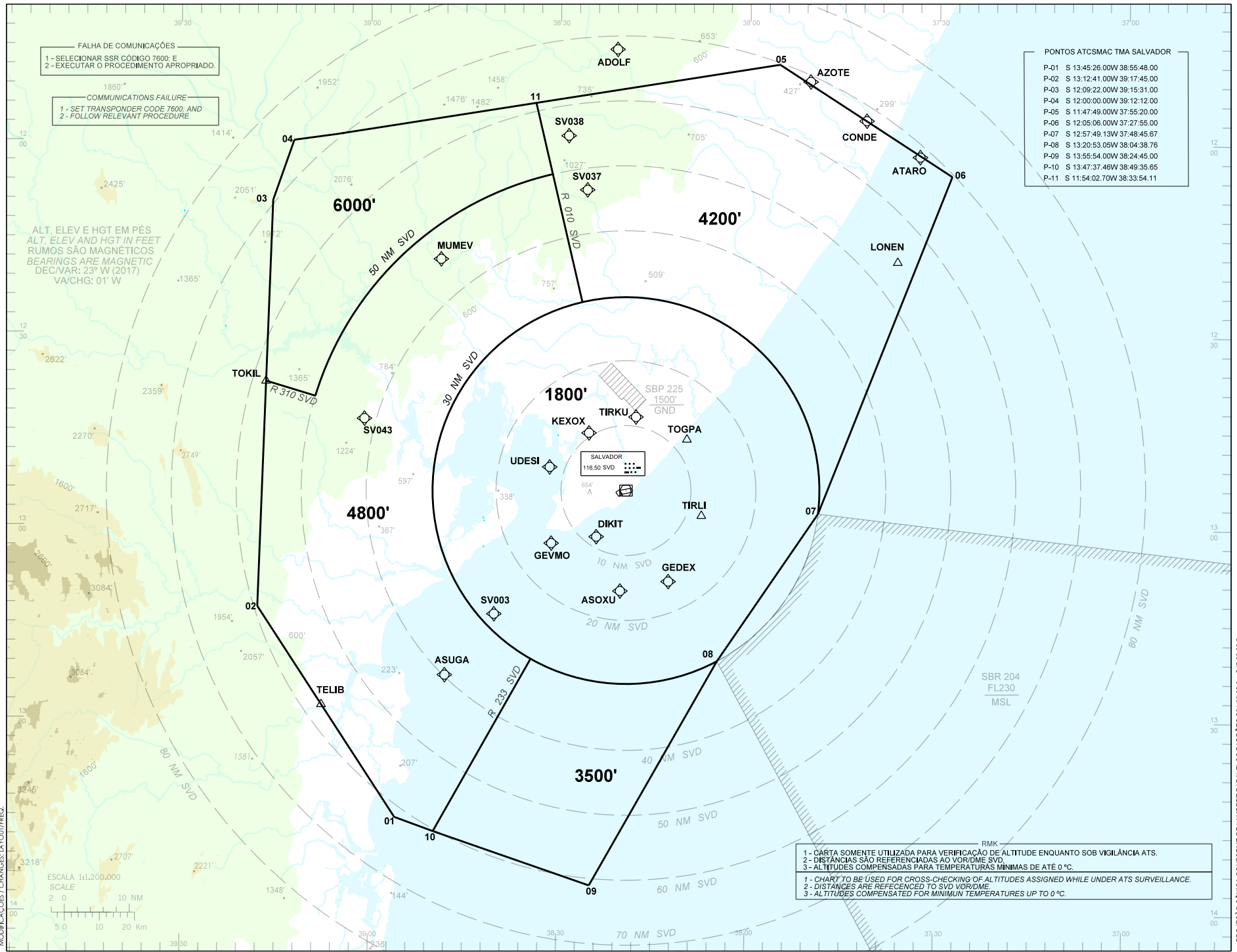
CARTA DE ALTITUDE MÍNIMA DE VIGILÂNCIA ATC - ATCSMAC

ATC SURVEILLANCE MINIMUM ALTITUDE ATC

SBSV ELEV 66'
TA 7000'

APP SALVADOR
119.35 119.80 120.80 129.45

TMA SALVADOR



FALHA DE COMUNICAÇÕES
1 - SELECIONAR SSR CÓDIGO 7600; E
2 - EXECUTAR O PROCEDIMENTO APROPRIADO.

COMMUNICATIONS FAILURE
1 - SET TRANSPONDER CODE 7600; AND
2 - FOLLOW RELEVANT PROCEDURE.

PONTOS ATCSMAC TMA SALVADOR

P-01	S 13:45:26.00W 38:55:48.00
P-02	S 13:12:41.00W 39:17:45.00
P-03	S 12:09:22.00W 39:15:31.00
P-04	S 12:00:00.00W 39:12:12.00
P-05	S 11:47:49.00W 37:55:20.00
P-06	S 12:05:06.00W 37:27:55.00
P-07	S 12:57:49.13W 37:48:45.67
P-08	S 13:20:53.05W 38:04:38.76
P-09	S 13:55:54.00W 38:24:45.00
P-10	S 13:47:37.46W 38:49:35.65
P-11	S 11:54:02.70W 38:33:54.11

1 - CARTA SOMENTE UTILIZADA PARA VERIFICAÇÃO DE ALTITUDE ENQUANTO SOB VIGILÂNCIA ATC.
2 - DISTÂNCIAS SÃO REFERENCIADAS AO VOR/DME SVD.
3 - ALTITUDES COMPENSADAS PARA TEMPERATURAS MÍNIMAS DE ATÉ 0 °C.

1 - CHART TO BE USED FOR CROSS-CHECKING OF ALTITUDES ASSIGNED WHILE UNDER ATC SURVEILLANCE.
2 - DISTANCES ARE REFERENCED TO SVD VOR/DME.
3 - ALTITUDES COMPENSATED FOR MINIMUM TEMPERATURES UP TO 0 °C.

PROJEÇÃO CÔNICA CONFORME DE LAMBERT PARALELOS PADRÕES S01 00 00 e S17 00 00 0.