

CARTA DE APROXIMAÇÃO  
POR INSTRUMENTOS (IAC)

SÃO PAULO / Congonhas (SBSP)

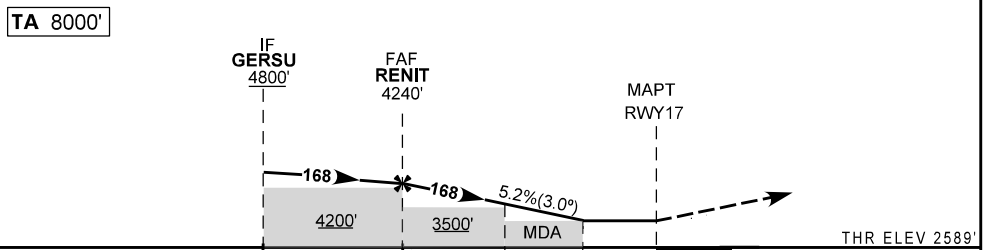
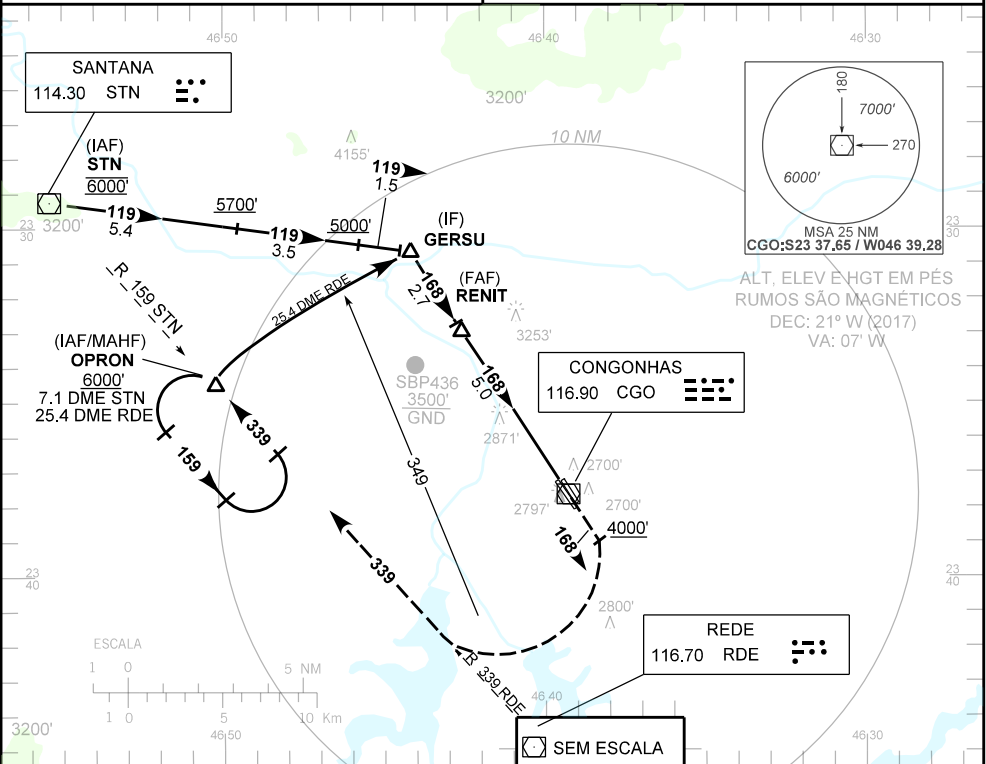
INSTRUMENT APPROACH CHART (IAC)

VOR Z RWY 17L/17R

AD ELEV: 2631'	ATIS 127.65	APP SÃO PAULO 133.85 119.05 134.90 119.80 129.00 119.60 122.75 121.50	TWR SÃO PAULO 118.05 127.15 121.50	GNDC SÃO PAULO 121.90
----------------	----------------	---	---------------------------------------	--------------------------

RMK: ATIS D-ATIS AVBL.

Aproximação Perdida: 1) Subir para 6000' na RDL 168 CGO, gradiente MNM 5%. Após 4000', curvar à direita RDL 339 RDE ou RDL 159 STN até OPRON para espera. 2) IAS MAX 180KT.



TO THR 17	7.7	5.0	3.2	1.6	0.0	THR ELEV 2589'
TO CGO(DME)	8.2	5.5	3.7	2.1	0.5	

RENIT	4.0	3.0	2.0	1.6	RWY17	KT	90	110	130	150	170	190
4240	3913	3595	3276	3140	ALT	FPM	500	600	700	800	900	NA
1651	1324	1006	687	551	(HGT)	FAF-MAPT	NIL					

POUSO DIRETO	CAT	A	B	C	D	E
VOR	MDA / OCH / TETO	3140 / 560 / 600				NA
	ALS/NO ALS/ RVR ALS(m)	800 / 1600 / NIL		1700 / 2400 / NIL		
CIRCULAR	MDA / OCH / TETO	NA				
	VIS (m)					

MODIFICAÇÕES / CHANGES: PROC.